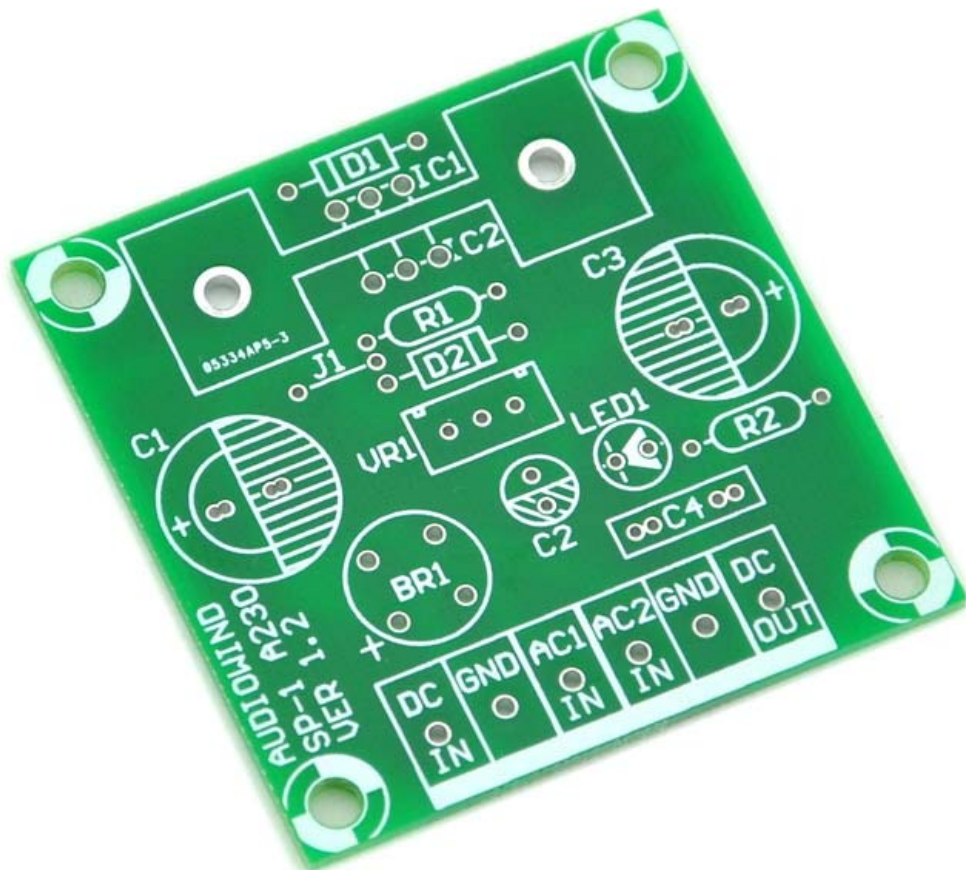


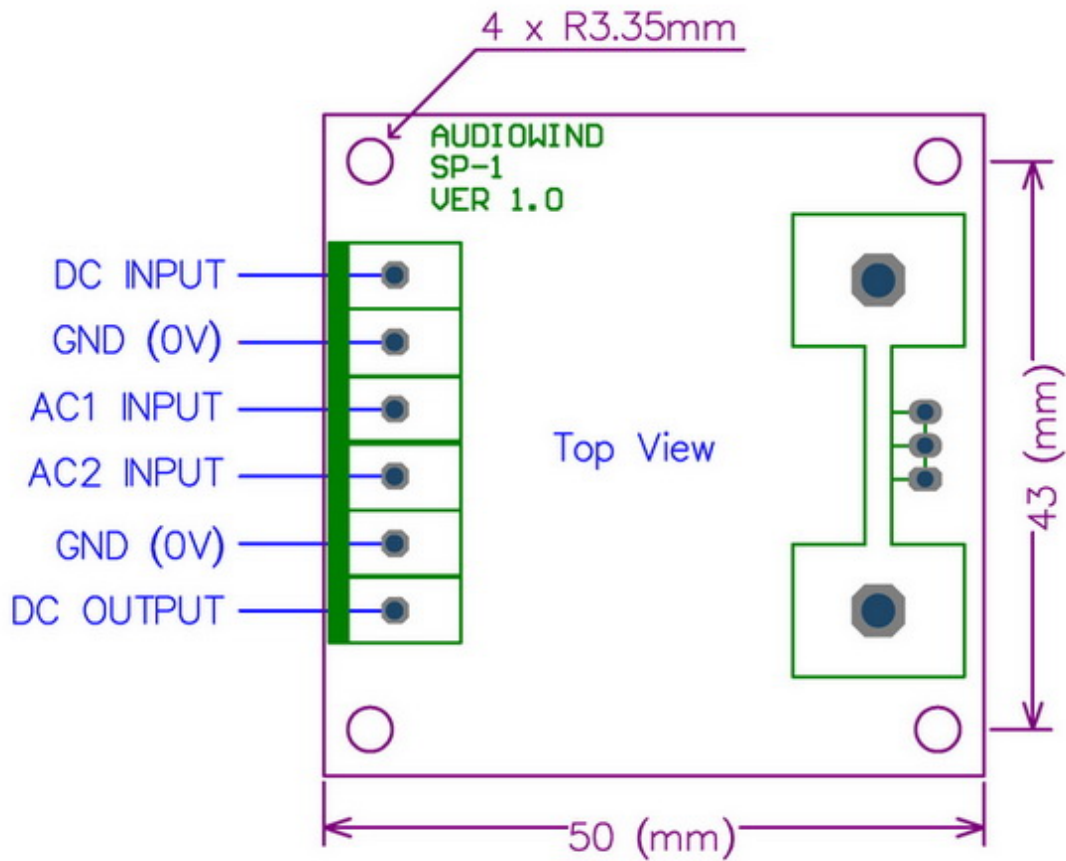
AudioWind Electronics-Salon

Positive Voltage Regulator PCB

Model: PCB-SP1(A-230)

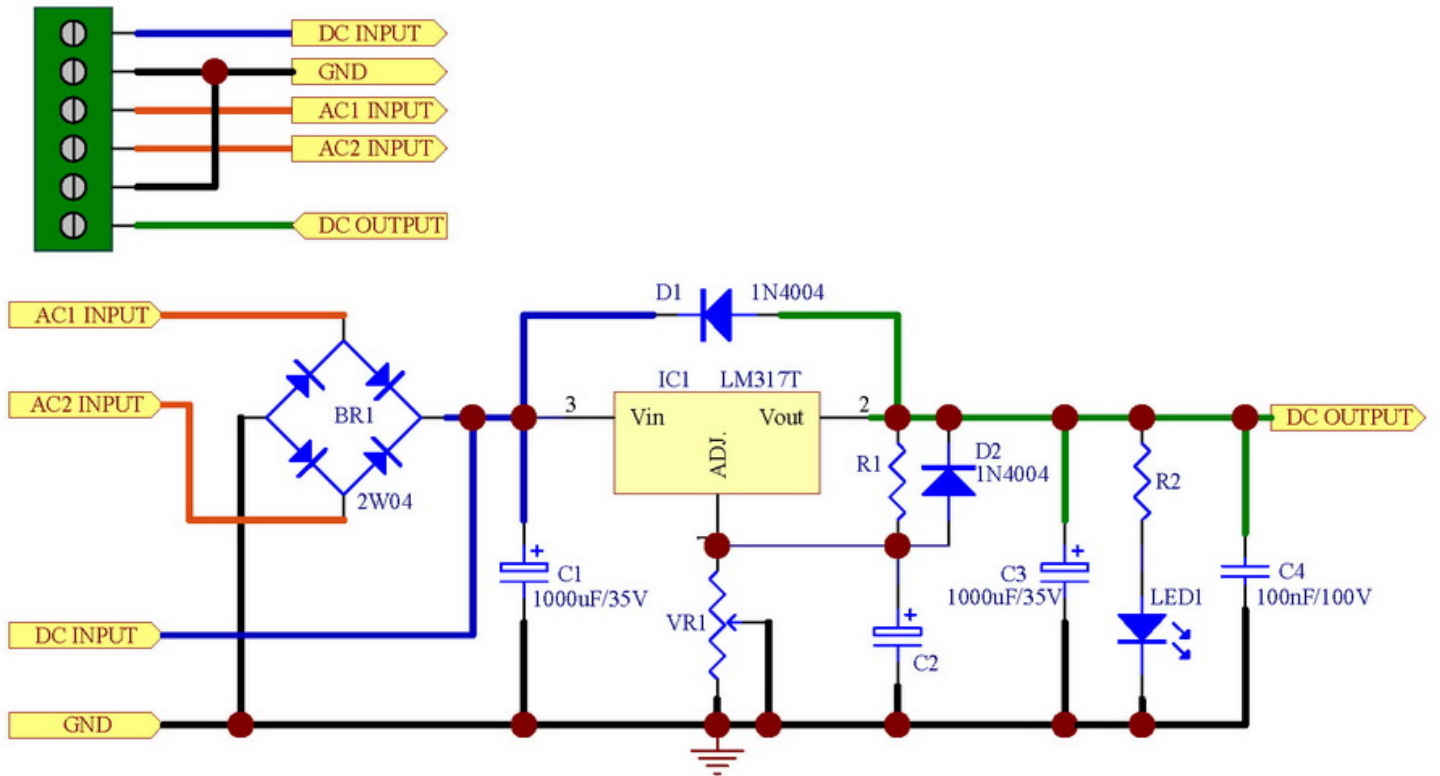


PCB Size and Wiring Diagram:



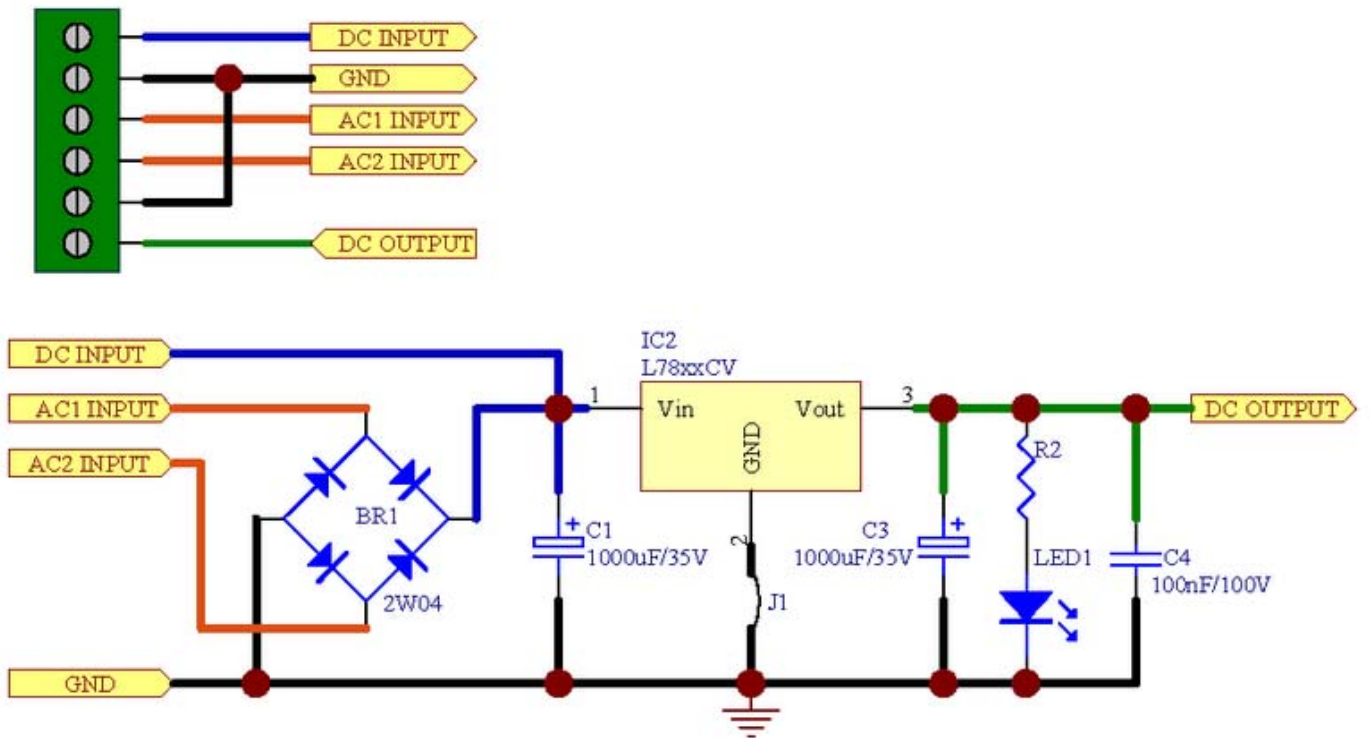
- DC INPUT: Positive DC voltage input.
- GND (0V): DC input ground (0V).
- AC1 INPUT: AC input 1.
- AC2 INPUT: AC input 2.
- GND (0V): DC output ground (0V).
- DC OUTPUT: Regulated positive DC voltage output.

Schematic for LM317:



Note: We recommend that you use normal brightness LED, R2 use 1.5K OHM 1/2W is suitable.

Schematic for 78xx IC:



Note:

J1 is a copper jumper wire or 0 OHM resistor.

We recommend that you use normal brightness LED.

For 7805, R2 use 470 OHM 1/2W.

For 7806, R2 use 470 OHM 1/2W.

For 7808, R2 use 1K OHM 1/2W.

For 7809, R2 use 1K OHM 1/2W.

For 7810, R2 use 1K OHM 1/2W.

For 7812, R2 use 1.5K OHM 1/2W.

For 7815, R2 use 1.8K OHM 1/2W.

For 7818, R2 use 2.2K OHM 1/2W.

For 7824, R2 use 3K OHM 1/2W.