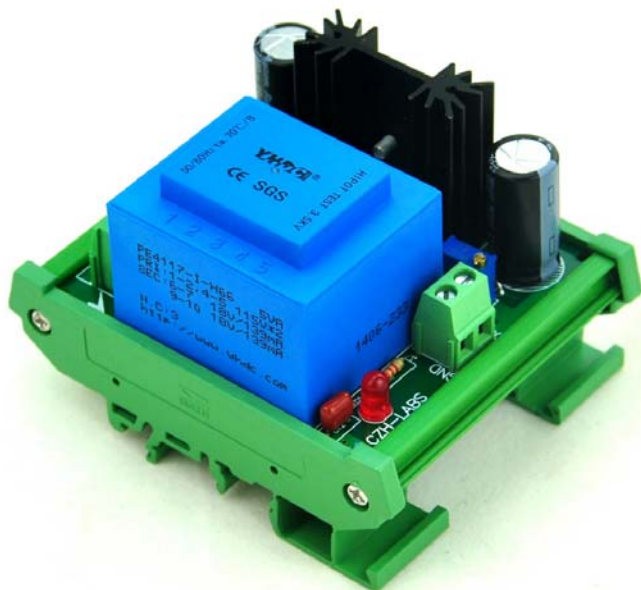
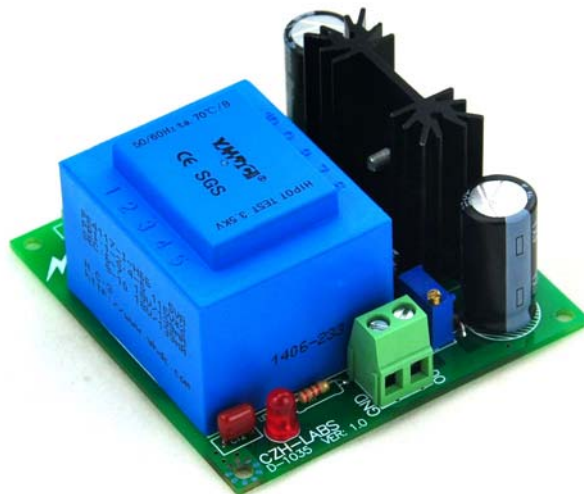


AudioWind Electronics-Salon

SPECIFICATION

Model: D-1035 series



Power Supply Module, with Mains Transformer and Voltage Regulator Circuit

Input Voltage: 230+/-20 VAC or 115V+/-10 VAC mains, 50/60Hz.

Output Voltage: DC 1.25V ~ 15.8V

Output Current: 0.25A

Panel Mount Version Size: 70 x 72 x 37mm (W x L x H).

DIN Rail Mount Version Size: 72 x 87 x 62mm (W x L x H).

PCB Size: 70 x 72.5 mm.

This item has been assembled, and electrical test passed.

Fully encapsulated 5VA power transformer, input AC115 or 230V AC two version. FR-4 fiber glass PCB. HQ terminal blocks, easy connection wires. RUBYCON YXF 105C long life and low impedance electrolytic capacitors. output voltage LED indicator. Based on the classic IC LM317 design.

DIN rail mount or panel mount to selectable, DIN rail carrier can support width 35mm / 32mm / 15mm rail.

Version:

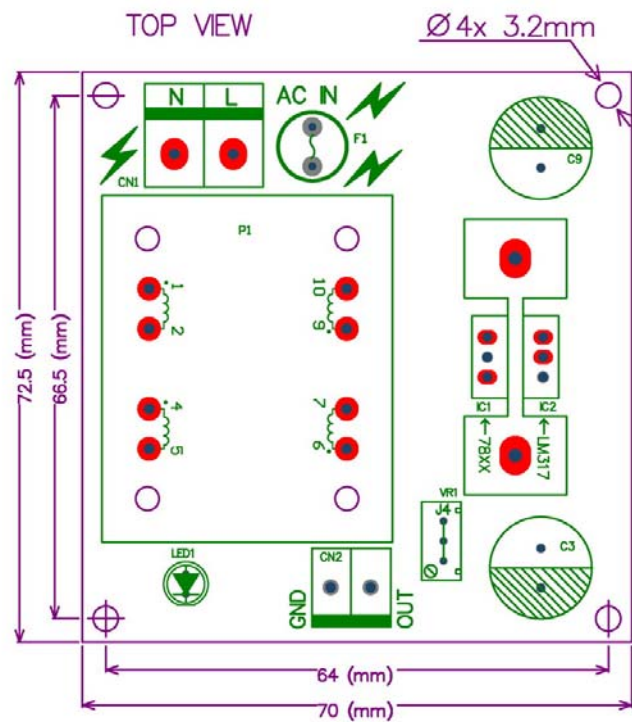
MD-D1035/115V ----- AC115V input, panel mount version.

MD-D1035/230V ----- AC230V input, panel mount version.

MD-D1035T/115V ----- AC115V input, DIN rail mount version.

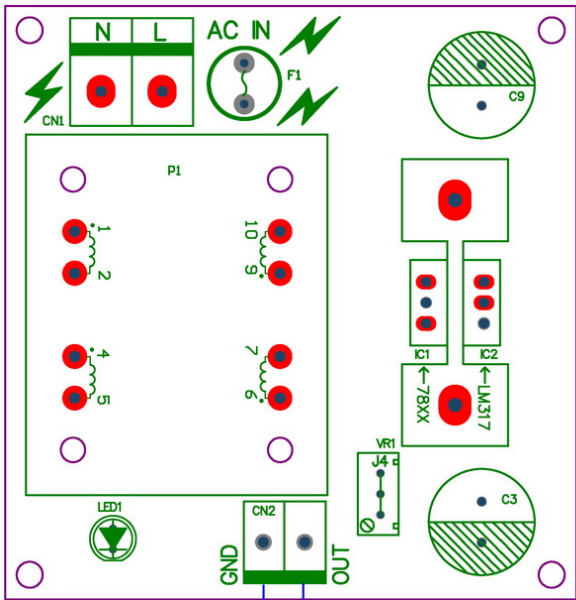
MD-D1035T/230V ----- AC230V input, DIN rail mount version.

PCB Mount Drawing:



Terminal Connect:

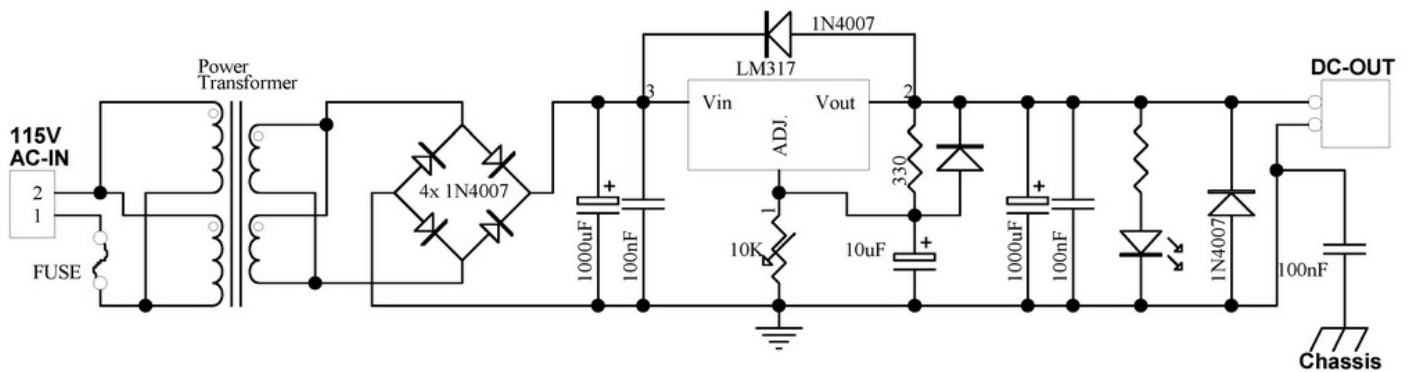
MAINS INPUT Version 1 : AC 115V
 Version 2 : AC 230V



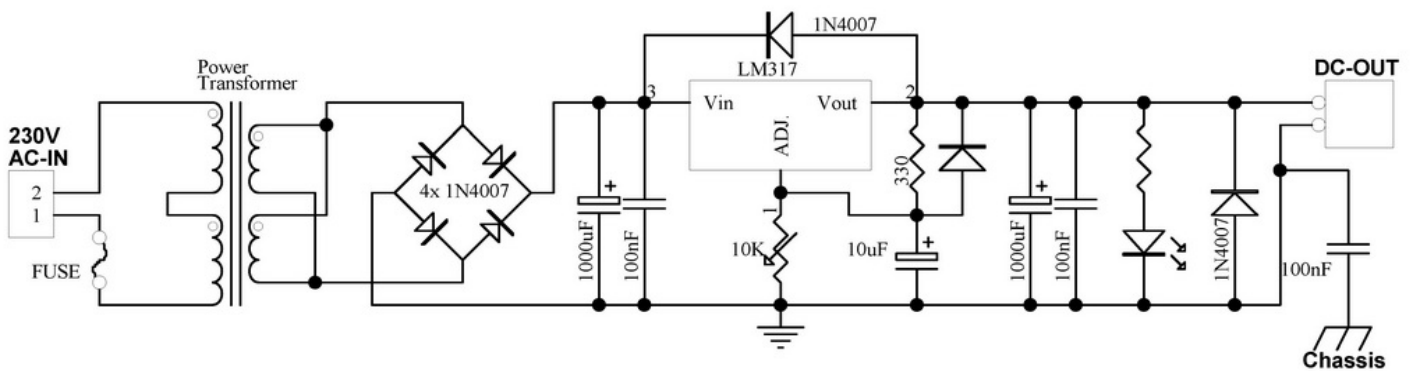
Regulated Voltage Output
GND / 0V

Schematic:

115V version



230V version



About output voltage adjust:

The blue block small component is a **28 turns** precision trimming potentiometer, you can adjust the brass slot head to change output voltage.

