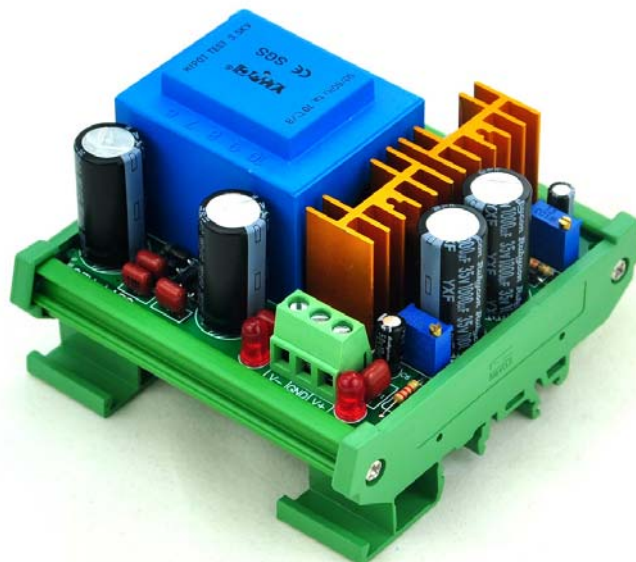


# AudioWind Electronics-Salon

## SPECIFICATION

Model: D-1036 series



# Power Supply Module, with Mains Transformer and Voltage Regulator Circuit

Input Voltage: 230+/-20 VAC or 115V+/-10 VAC mains, 50/60Hz

Output Voltage: Positive and Negative DC 1.3V ~ 15.8V

Output Current: Positive 0.125A, Negative 0.125A.

Panel Mount Version Size: 80 x 72 x 37mm (W x L x H).

DIN Rail Mount Version Size: 82 x 87 x 60mm (W x L x H).

PCB Size: 80 x 72.5 mm.

This item has been assembled, and electrical test passed.

Fully encapsulated 5VA power transformer, input AC115 or 230V AC two version. FR-4 fiber glass PCB. HQ terminal blocks, easy connection wires. RUBYCON YXF 105C long life and low impedance electrolytic capacitors. output voltage LED indicator. Based on the classic IC LM317 / LM337 design.

DIN rail mount or panel mount to selectable, DIN rail carrier can support width 35mm / 32mm / 15mm rail.

## Version:

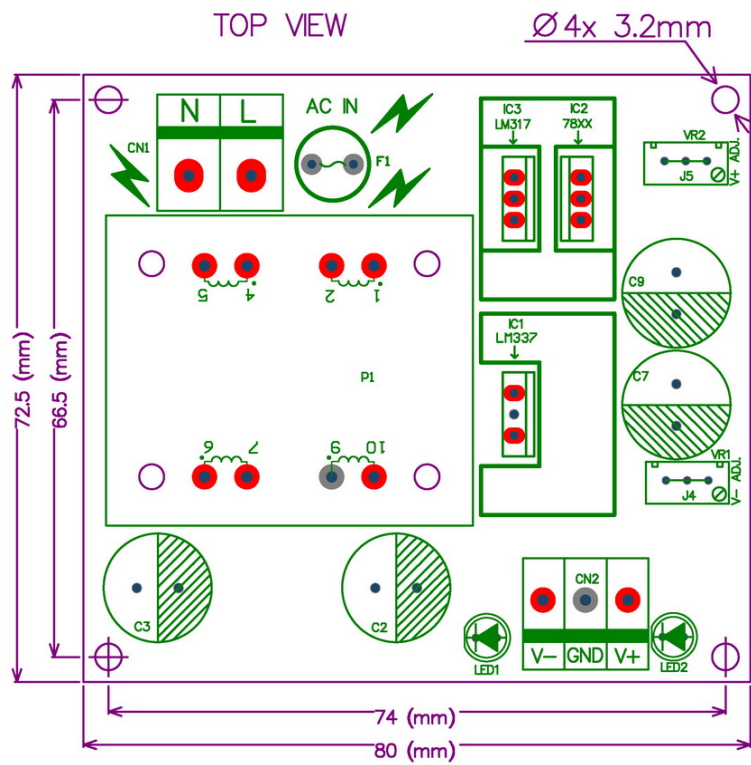
MD-D1036/115V ----- AC115V input, panel mount version.

MD-D1036/230V ----- AC230V input, panel mount version.

MD-D1036T/115V ----- AC115V input, DIN rail mount version.

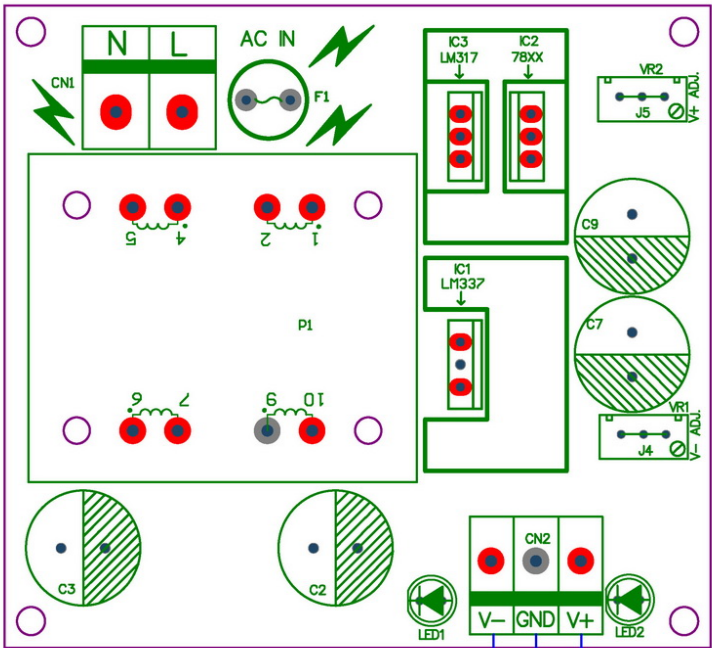
MD-D1036T/230V ----- AC230V input, DIN rail mount version.

PCB Mount Drawing:



Terminal Connect:

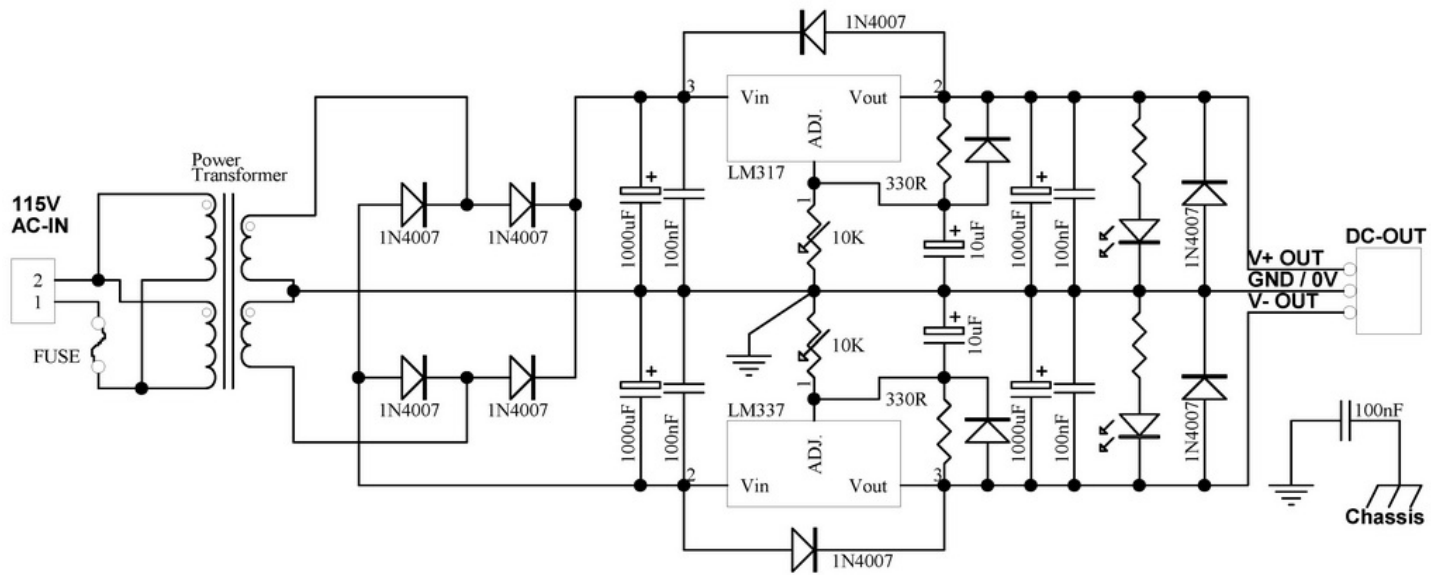
MAINS INPUT    Version 1 : AC 115V  
                          Version 2 : AC 230V



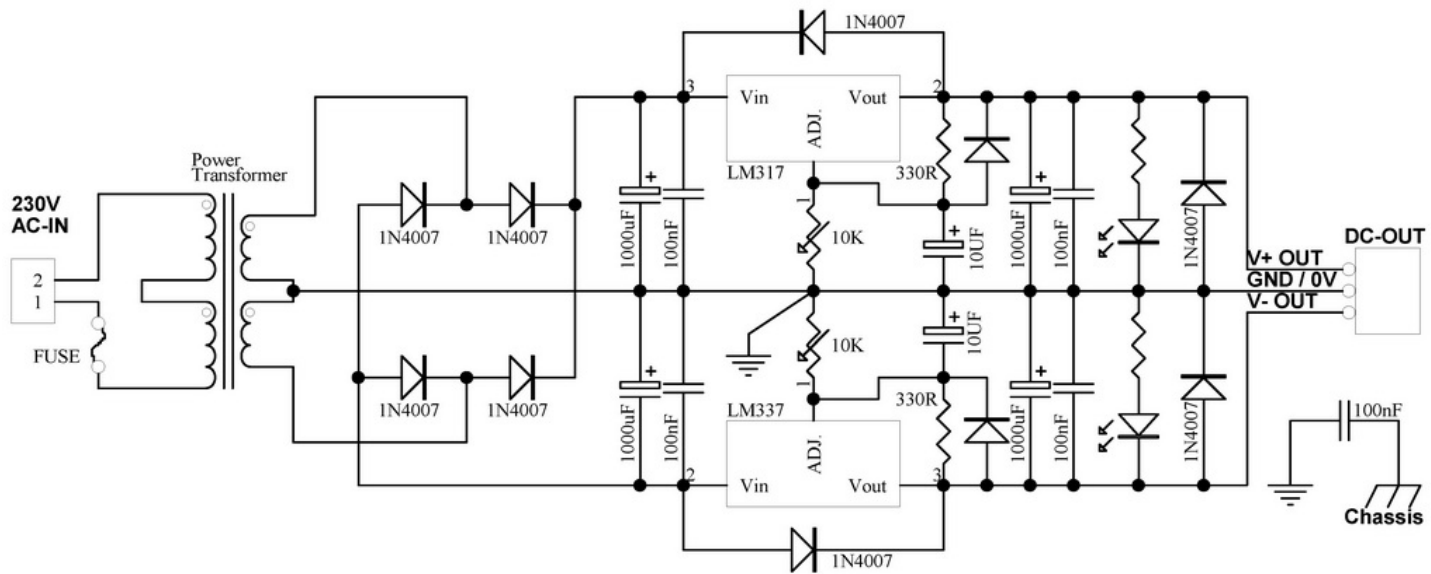
Negative Voltage Output  
GND / 0V  
Positive Voltage Output

Schematic:

115V version



230V version



## About output voltage adjust:

Two blue block small components is 28 turns precision trimming potentiometers, you can adjust the top brass slot head to change output voltage. VR2 adjust positive voltage, VR1 adjust negative voltage.

