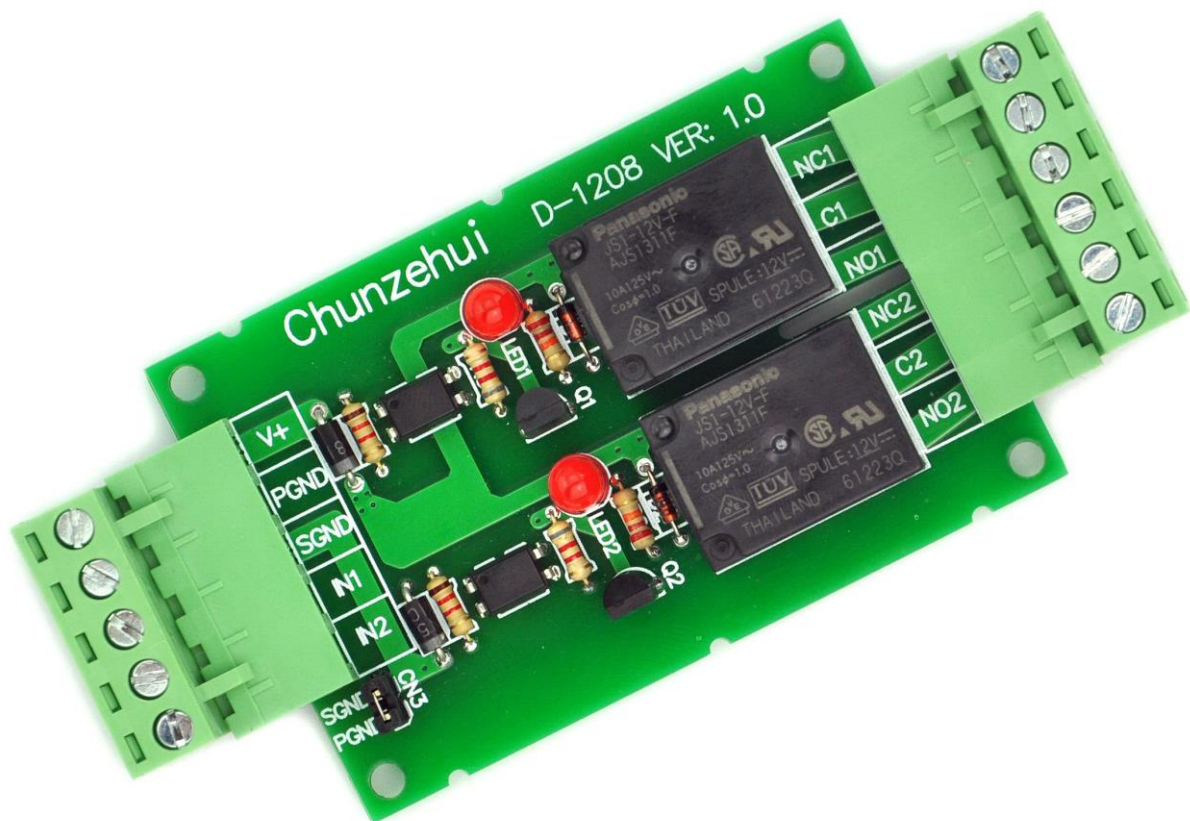


Chunzehui Electronics-Salon

2 SPDT 10Amp Opto-Isolated Relay Module, Pluggable Terminal Block

Model: D-1208 Series



Feature:

- 2 channel SPDT 10Amp power relays, High quality Panasonic JS1-xxV-F relays.
- Opto-Isolated for effective isolation between input and output circuits.
- High quality pluggable screw terminal blocks.
- Power supply reverse polarity protection, control signal reverse polarity protection. if you accidentally reverse these polarity, the module will not work, will not damage the module.
- LED indicator for each relay channel.
- Power supply ground(PGND) and Signal ground(SGND) separation design, you can also easily use short-circuit cap to connect together.

Characteristic Parameters:

Operating voltage			
Voltage version	5V	12V	24V
Relay part number	JS1-5V-F	JS1-12V-F	JS1-24V-F
Operating voltage range	3.7~6.5V DC	9.0~15.6V DC	17.0~31.2V DC
Operating current (relay all action)	150mA @5V	70mA @12V	40mA @24V
Operating current (relay all no action)	0mA		
Control signal input			
Low level (Relay no action)	0V ~ 0.5V		
High level (Relay action)	3V~17V		3V~27V
High level current	1.5mA @3V 3.1mA @5V 8.8mA @12V 11.4mA @15V		0.6mA @3V 1.2mA @5V 3.3mA @12V 4.2mA @15V 7.0mA @24V
Output (relay switch) contact rating			
Maximum voltage	250VAC / 100VDC		
Maximum current	10Amp @125VAC 6Amp @250VAC 5Amp @100VDC		

Terminal Block:

Pitch 5.08mm/0.2" pluggable screw terminal block.

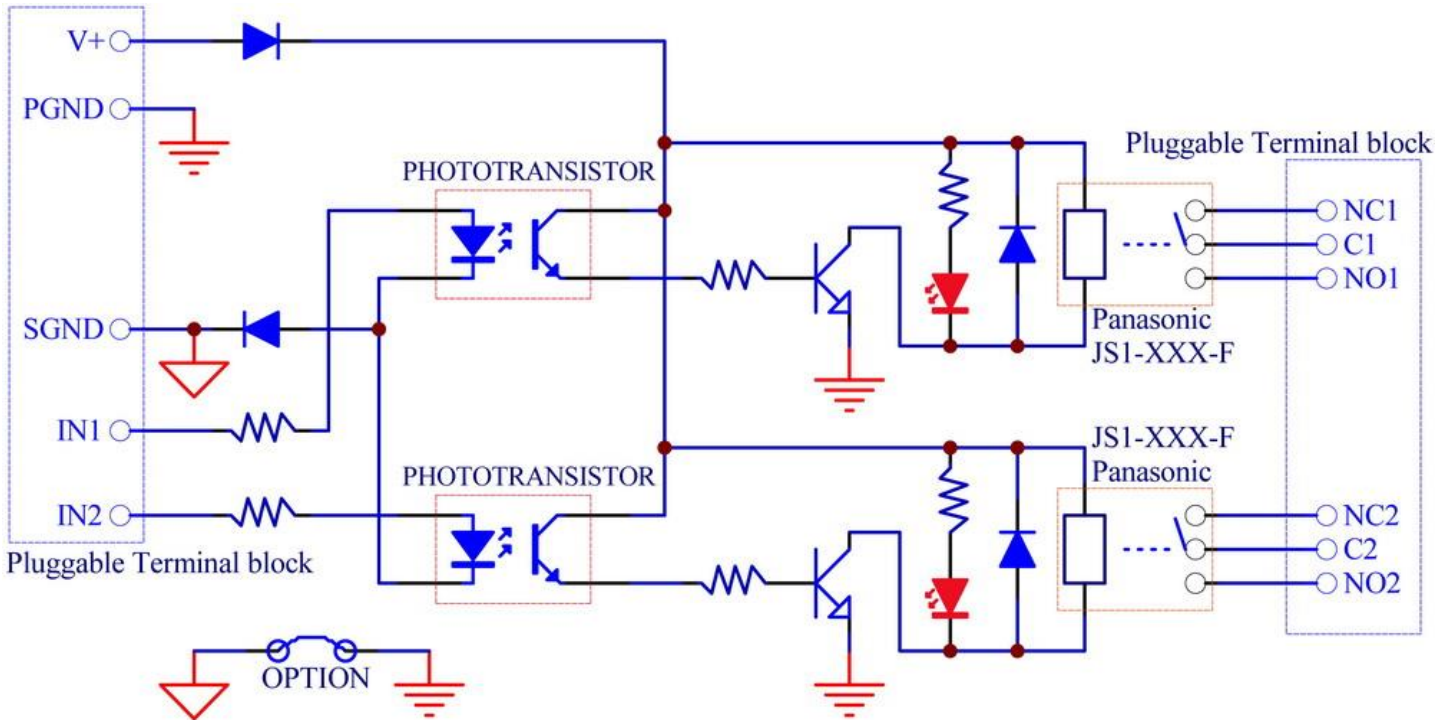
Wire range 28AWG ~ 12AWG / 2.5mm²

Strip length 7mm.

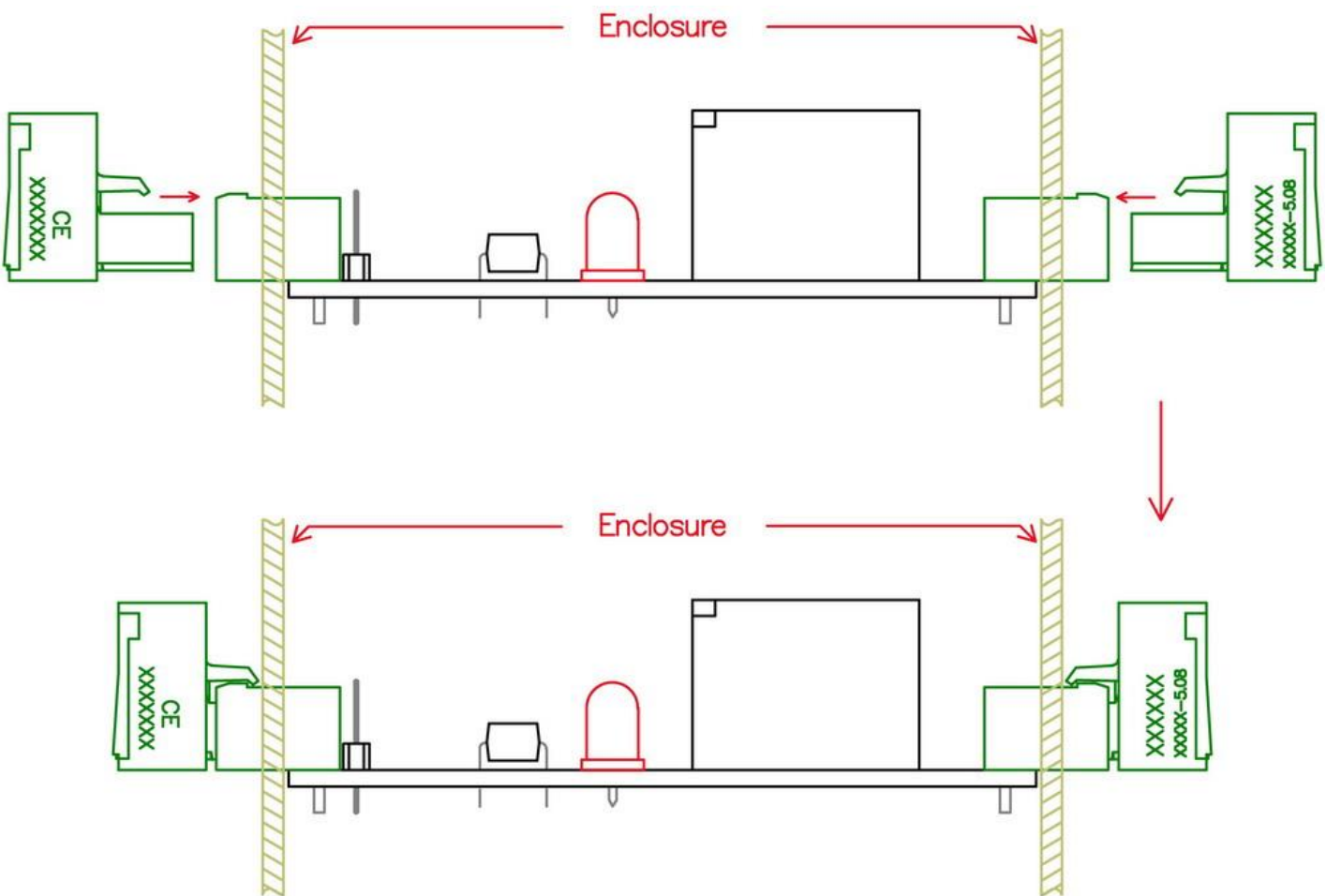
Screws - M2.5,steel,Cr3+ Zn plated.

Pin header and Cage - Brass.

Schematic:

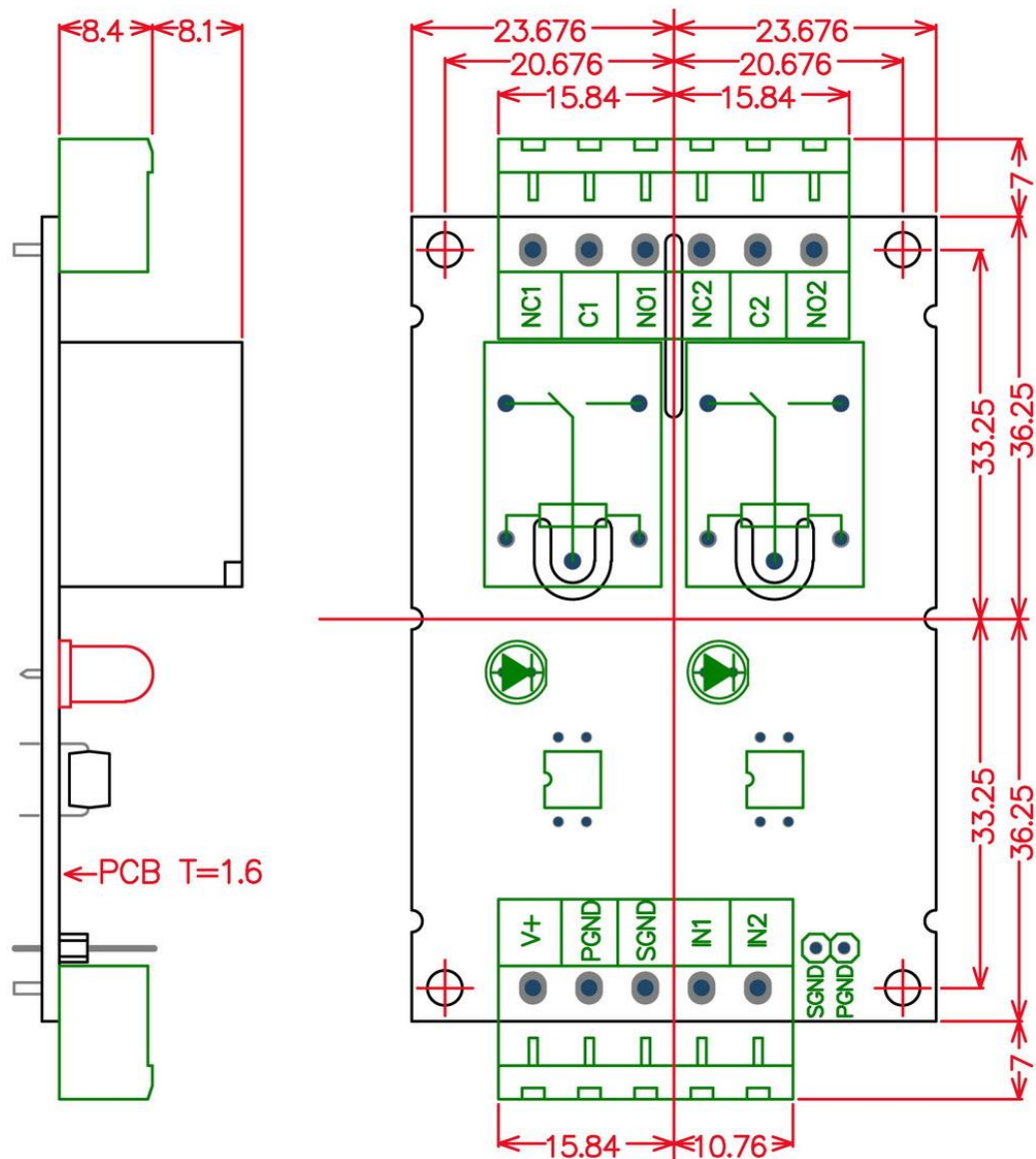


Recommended mount use method:



Dimension:

unit --- mm



V+: Operating power supply input (Vcc).
PGND: Operating power supply 0V(ground).
SGND: Control signal input 0V(ground).
INx: Control signals input.
NOx: Relay switch normally open terminal.
NCx: Relay switch normally close terminal.
Cx: Relay switch common terminal.

<http://www.electronics-salon.com>
451458699@qq.com